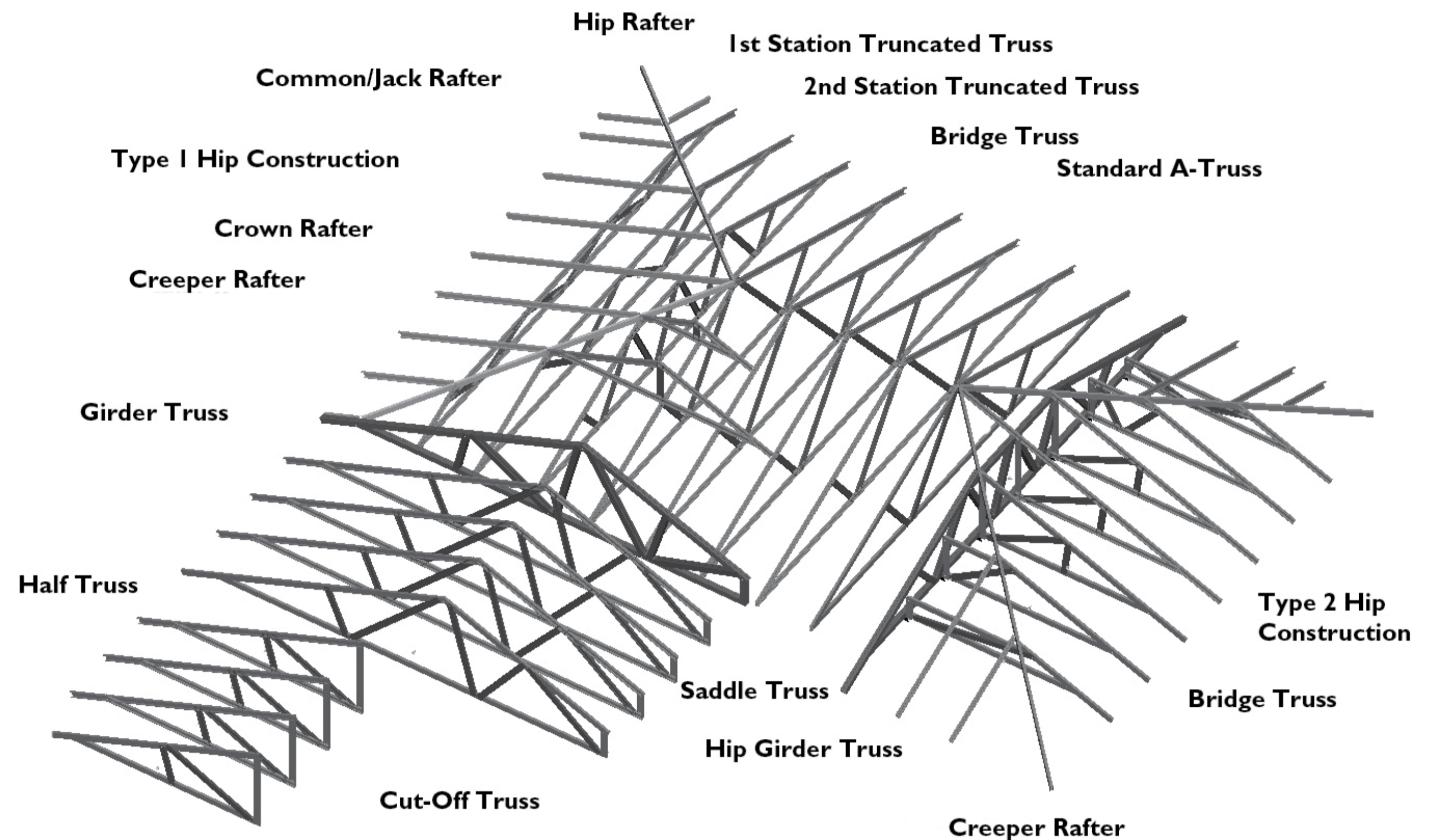


ENDURO FRAME®

QUALITY CONTROL & SUPPLIERS OF COMPONENTS:

FOR ENDUROTRUSS® REFER TO THE ENDUROTRUSS® PRODUCT INSPECTION SHEETS AVAILABLE ONLINE AT:

<https://enduroframe.atlassian.net/wiki/display/ER/Assembly>



VEED HIP PLATE:

HIP OVERHANG (MM)	A (MM)	B (MM)	C (MM)	TRIM (MM)
0-200	2060	680	410	480
200-500	2725	905	700	720
500-700	2725	1320	905	1120
700-900	3000	1680	1080	1480

CHORD SPLICING

BOXING FIXED WITH M6-1Px18MM SMOOTH TOP TEK SCREW

NOTE: SCREWS TO BE PLACED AT 50MM FROM ENDS AND AT MAXIMUM 600MM CENTRES

TRUSS CHORD TO BE SPLICED

NOTE: SCREWS TO BE PLACED AS PER ATTACHED DETAIL

SCREWS & BRACKETS

- TRUSSTITE SCREW
- Z10015 STIFFENER (150 - 200)
- APEX STIFFENER
- HEEL G BRACKET (260)
- 200 X 25 X 3MM STRAP (200, 25)
- 12-14 X 20MM HEX SCREW FLAT HEAD ALT AVAILABLE
- STIFFENING PLATE - 1.5MM 75MM SYSTEM (100)
- STIFFENING PLATE - 1.5MM 90MM SYSTEM (125)
- 35 X 35 X 1.0MM X 200MM EA KNEE STIFFENER
- PRYDA CPAH
- 126 X 78 X 1.9MM HIP MITRE PLATE (BEND LINE)
- 50 X 50 X 3MM X 200MM EA TIE DOWN BRACKET
- 125 X 35 X 1.5MM ELBOW STIFFENER

NOTE: CAN BE SHOP MADE FROM G450 STEEL

NOTE: HEEL G BRACKET MAY BE REPLACED WITH A 200 X 35 X 1.5MM ANGLE LINTEL 260MM LONG

NOTE: 200 X 25 X 3MM STRAP MAY BE SHOP MADE FROM G450 STEEL

NOTE: DETAILED BRACKET AND SCREW DETAILS INCLUDING SUPPLIER CONTACT INFORMATION IS AVAILABLE ONLINE IN THE ENDUROTRUSS® INSTALLATION MANUAL

BOXING

BOXING FIXED WITH M6-1Px18MM SMOOTH TOP TEK SCREW

NOTE: SCREWS TO BE PLACED AT 50MM FROM ENDS AND AT MAXIMUM 600MM CENTRES

TRUSS COMPONENTS (TYPICAL):

NOTE: TRUSSTITE SCREWS (T)

WEB STIFFENING SCREWS (S) TO BE PLACED TOWARDS THE CENTRE OF THE TRUSS

TRUSS COMPONENT MARKING:
JOB NO/TITLE-TRUSS NO-PART NO-PART LENGTH
EG: ENCD001-007-001-7500

TO VIEW A VIDEO ON HOW TO ASSEMBLE ENDUROTRUSS® AND ENDUROWALL® FRAMES, GO TO:

https://www.enduroframe.com.au/building/assembly_and_installation_videos

OR SCAN THE QR CODE TO THE RIGHT



TO VIEW THE ENDUROTRUSS® INSTALLATION MANUAL, GO TO:

<https://enduroframe.atlassian.net/wiki/pages/viewpage.action?pageId=24510800>

OR SCAN THE QR CODE TO THE RIGHT

